

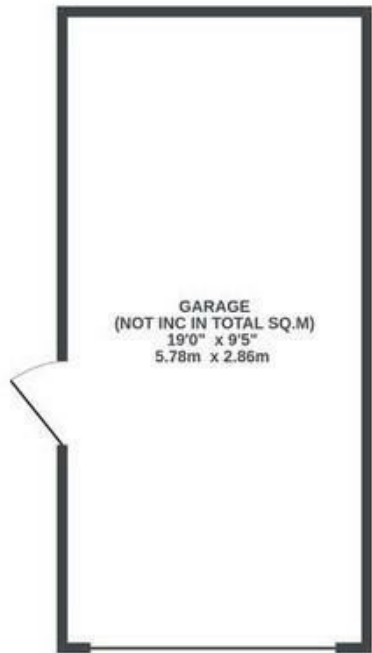
Hillsborough Road

BRISLINGTON

APPROXIMATE FLOOR AREA
83.6 SQM / 900 SQFT



GARAGE (NOT IN SITU)
0 sq. ft. (0.0 sq. m.) approx.

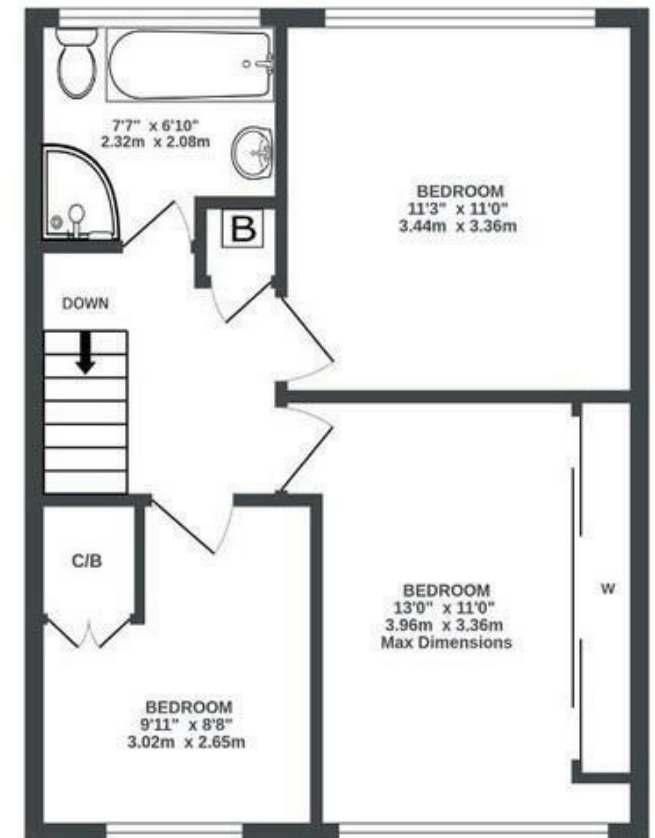


GARAGE
(NOT INC IN TOTAL SQ.M)
19'0" x 9'5"
5.78m x 2.86m

GROUND FLOOR
448 sq. ft. (41.6 sq. m.) approx.



1ST FLOOR
452 sq. ft. (42.0 sq. m.) approx.



Illustrations are for reference purposes only, measurements are approximate, not to scale.

Boardwalk

Hillsborough

, BRISTOL



£375,000



BS4 3QW



3 Bedrooms



2 Bathrooms

"My garden has been a haven for me, family and friends. We've enjoyed BBQs, basking in the all-day sun, and watching the wildlife. I've loved leisurely strolls through the changing seasons. Local independent shops along Sandy Park Road including the friendly greengrocer, delicious lunches from the deli, cozy coffee shop, and helpful bike shop are places I've built relationships and felt a genuine sense of belonging."

